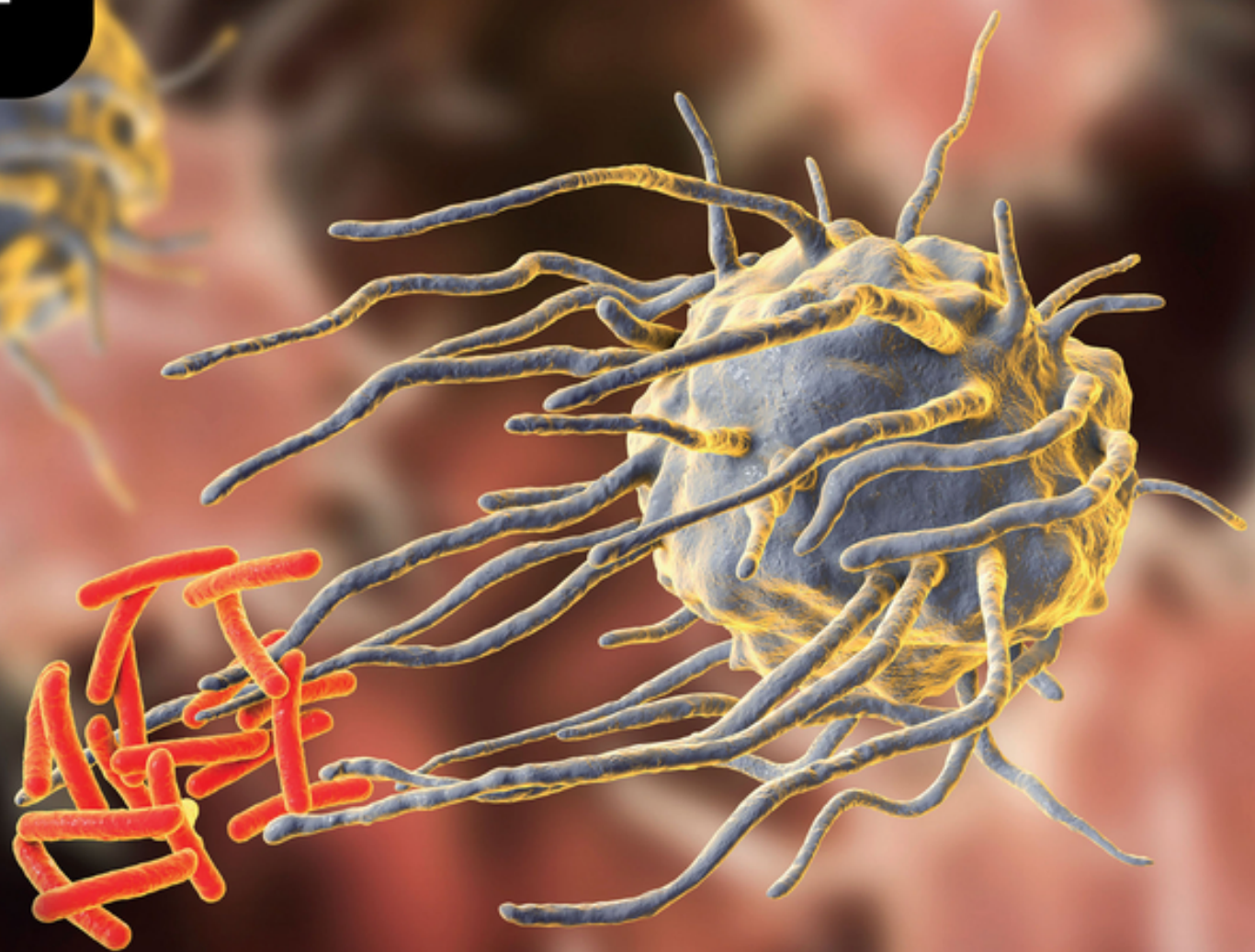


ESSENTIALS

CHAPEL AND HAENEY'S ESSENTIALS OF  
**CLINICAL  
IMMUNOLOGY**

SIRAJ A. MISBAH | GAVIN P. SPICKETT | VIRGIL A.S.H. DALM  
SEVENTH EDITION



WILEY Blackwell

# Table of Contents

[Cover](#)

[Title Page](#)

[Copyright Page](#)

[Preface to the Seventh Edition](#)

[Preface to the First Edition](#)

[Key to Illustrations](#)

[About the Companion Website](#)

[CHAPTER 1: Basic Components: Structure and Function](#)

[1.2 Key molecules](#)

[1.3 Functional basis of innate responses](#)

[1.4 Functional basis of the adaptive immune responses](#)

[1.5 Physiological outcomes of immune responses](#)

[1.6 Tissue damage caused by the immune system](#)

[1.7 Organization of the immune system: an overview](#)

[1.8 Conclusions](#)

[CHAPTER 2: Infection](#)

[2.2 Normal resistance to infection](#)

[2.3 Viral infection](#)

[2.4 Bacterial infection](#)

[2.5 Mycobacterial infection](#)

[2.6 Fungal infection](#)

[2.7 Parasitic infection](#)

[CHAPTER 3: Immunodeficiency](#)

[3.2 Primary immune deficiencies](#)

[3.3 Primary antibody deficiencies](#)

[3.4 Combined primary T- and B-cell immunodeficiencies](#)

[3.5 Primary defects in non-specific immunity](#)

[3.6 Secondary immunodeficiency](#)

## [CHAPTER 4: Anaphylaxis and Allergy](#)

[4.2 Immediate \(type I\) hypersensitivity](#)

[4.3 Atopy](#)

[4.4 Anaphylaxis](#)

[4.5 Allergic conjunctivitis](#)

[4.6 Respiratory allergy](#)

[4.7 Food allergy and intolerance](#)

[4.8 Skin disease and allergy](#)

## [CHAPTER 5: Autoimmunity](#)

[5.2 Patterns of autoimmune disease](#)

[5.3 Who gets autoimmune disease?](#)

[5.4 What prevents autoimmunity?](#)

[5.5 How does tolerance break down?](#)

[5.6 What triggers autoimmunity?](#)

[5.7 Mechanisms of tissue damage](#)

[5.8 Treatment of autoimmune disease](#)

## [CHAPTER 6: Lymphoproliferative Disorders](#)

[6.2 Biology of malignant transformation in haematopoietic cells](#)

[6.3 Leukaemia](#)

[6.4 Lymphomas](#)

[6.5 Plasma cell dyscrasias](#)

## [CHAPTER 7: Immune Manipulation](#)

[7.2 Immunosuppression](#)

[7.3 Immunization against infection](#)

[7.4 Immune potentiation other than vaccines](#)

## [CHAPTER 8: Transplantation](#)

[8.2 Histocompatibility genetics in humans](#)

[8.3 Renal transplantation](#)

[8.4 Other types of transplantation](#)

[8.5 Haematopoietic stem cell transplantation](#)

## [CHAPTER 9: Kidney Diseases](#)

[9.2 Clinical syndromes](#)

[9.3 Classifications of glomerulonephritis](#)

[9.4 Asymptomatic haematuria](#)

[9.5 Acute glomerulonephritis](#)

[9.6 Chronic glomerulonephritis](#)

[9.7 Rapidly progressive glomerulonephritis](#)

[9.8 Nephrotic syndrome](#)

[9.9 Tubulointerstitial nephropathy](#)

[9.10 Chronic renal failure](#)

[9.11 Recurrent glomerulonephritis in transplanted kidneys](#)

## [CHAPTER 10: Joints and Muscles](#)

[10.2 Patterns of joint disease](#)

[10.3 Arthritis and infection](#)

[10.4 Rheumatoid arthritis](#)

[10.5 Seronegative spondyloarthritis](#)

[10.6 Chronic arthritis in children](#)

[10.7 Systemic lupus erythematosus](#)

[10.8 Other 'connective tissue' diseases](#)

[10.9 Systemic vasculitis](#)

[10.10 Inflammatory muscle disease or myositis](#)

[10.11 Hereditary periodic fevers](#)

## [CHAPTER 11: Skin Diseases](#)

[11.2 Infections and the skin](#)

[11.3 T cell-mediated skin disease](#)

[11.4 Autoimmune skin disease](#)

[11.5 Systemic diseases with skin involvement](#)

## [CHAPTER 12: Eye Diseases](#)

[12.2 Conjunctivitis](#)

[12.3 Keratitis](#)

[12.4 Scleritis](#)

[12.5 Uveitis](#)

## [CHAPTER 13: Chest Diseases](#)

[13.2 Respiratory infections](#)

[13.3 Granulomatous diseases](#)

[13.4 Interstitial lung disease](#)

[13.5 Connective tissue disease and the lung](#)

[13.6 Pulmonary vasculitis](#)

[13.7 Cardiac disease](#)

[13.8 Coronary artery disease](#)

[13.9 Diseases of the great vessels](#)

## [CHAPTER 14: Gastrointestinal and Liver Diseases](#)

[14.2 Infection and the gut](#)

[14.3 Gastritis](#)

[14.4 Food-induced gastrointestinal disease](#)

[14.5 Autoimmune enteropathy](#)

[14.6 Inflammatory bowel disease](#)

[14.7 Viral hepatitis](#)

[14.8 Autoimmune liver diseases](#)

## [CHAPTER 15: Endocrinology and Diabetes](#)

[15.2 Mechanisms of endocrine autoimmunity](#)

[15.3 Thyroid disease](#)

[15.4 Diabetes mellitus](#)

[15.5 Adrenal disease](#)

[15.6 Parathyroid disease](#)

[15.7 Gonadal disease](#)

[15.8 Infertility](#)

[15.9 Pituitary disease](#)

[15.10 Autoimmune polyendocrine disease](#)

## [CHAPTER 16: Non-malignant Haematological Diseases](#)

[16.2 Autoimmune haemolytic anaemias](#)

[16.3 Immune thrombocytopenia](#)

[16.4 Immune neutropenia](#)

[16.5 Haematopoietic progenitor cells](#)

[16.6 Immune disorders of coagulation](#)

[16.7 Blood transfusion](#)

## [CHAPTER 17: Neuroimmunology](#)

[17.2 Infections](#)

[17.3 Demyelinating diseases of the central nervous system](#)

[17.4 Autoimmune diseases of the neuromuscular junction](#)

[17.5 Immune-mediated neuropathies](#)

[17.6 Paraneoplastic syndromes](#)

[17.7 Cerebral systemic lupus erythematosus](#)

[17.8 Autoimmune encephalitis](#)

## [CHAPTER 18: Immunological Diseases in Pregnancy](#)

### [18.2 Pregnancy and maternal infection](#)

### [18.3 Protection of the fetus and neonate against infection](#)

### [18.4 Disorders of pregnancy](#)

### [18.5 Clinical relevance of antibodies to reproductive components](#)

## [CHAPTER 19: Techniques in Clinical Immunology](#)

### [19.2 Investigation of immunoglobulins](#)

### [19.3 Investigation of complement and immune-complex disorders](#)

### [19.4 Antibodies to microbial antigens](#)

### [19.5 Detection of autoantibodies](#)

### [19.6 Tests for allergy and hypersensitivity](#)

### [19.7 Assessment of lymphocytes](#)

### [19.8 Assessment of neutrophils and monocytes](#)

### [19.9 Recombinant DNA technology in clinical immunology](#)

### [19.10 Histocompatibility testing](#)

## [Appendix Further Resources](#)

## [Index](#)

## [End User License Agreement](#)

# **List of Tables**

## Chapter 1

### [Table 1.1 Components of innate and adaptive immunity](#)

### [Table 1.2 Factors influencing the immune response to an antigen, i.e. its i...](#)



[Table 1.3 Markers on dendritic cells](#)

[Table 1.4 Location and ligands for toll-like receptors \(TLRs\)](#)

[Table 1.5 Immunoglobulin classes and their functions](#)

[Table 1.6 Effector molecules in immunity](#)

[Table 1.7 Actions of interleukin-1](#)

[Table 1.8 Clinically important cytokines grouped by effect on immune or inf...](#)

[Table 1.9 Examples of clinically important adhesion molecules](#)

[Table 1.10 Proteins controlling classical and alternative complement pathwa...](#)

[Table 1.11 Classification of innate lymphoid cells \(ILCs\)](#)

[Table 1.12 Lymphocytes involved in adaptive immune responses](#)

[Table 1.13 Types of hypersensitivity - mechanism, examples of disease and r...](#)

[Table 1.14 Key molecular determinants of lymphocyte recirculation](#)

## Chapter 2

[Table 2.1 Factors influencing the extent and severity of an infection](#)

[Table 2.2 Patterns of antibodies to Epstein-Barr viral \(EBV\) antigens](#)

[Table 2.3 Clinical aspects of herpes virus infections](#)

[Table 2.4 Viruses and malignant disease](#)



[Table 2.5 Examples of viruses infecting cells of the immune system](#)

[Table 2.6 Mechanisms of immune evasion by viruses](#)

[Table 2.7 Some mechanisms of immune evasion by bacteria](#)

[Table 2.8 Examples of diseases caused by immune reactions to bacterial anti...](#)

[Table 2.9 Risk factors for the development of tuberculosis](#)

[Table 2.10 Mechanisms of immune evasion by mycobacteria](#)

[Table 2.11 Some examples of fungal infection in humans](#)

[Table 2.12 Mechanisms of protozoal survival](#)

### Chapter 3

[Table 3.1 Prevalence of primary antibody deficiencies](#)

[Table 3.2 Major causes of primary antibody deficiencies in children and adu...](#)

[Table 3.3 Tests for functional antibodies \(with examples in brackets\)](#)

[Table 3.4 Immunological investigations\\* in Case 3.1, X-linked agammaglo...](#)

[Table 3.5 Immunological investigations in Case 3.2, CD40 ligand deficiency...](#)

[Table 3.6 Immunological investigations\\* in Case 3.3, common variable im...](#)

[Table 3.7 Immunological investigations\\* in Case 3.4, IgA with IgG subcl...](#)

[Table 3.8 Immunological investigations\\* in Case 3.5, severe combined im...](#)

[Table 3.9 Examples of some of the commonest severe combined immunodeficienc...](#)

[Table 3.10 Some primary combined immune deficiencies with other non-immunol...](#)

[Table 3.11 Prerequisites for gene therapy in humans](#)

[Table 3.12 Immunological investigations in Case 3.6, IRAK-4 deficiency](#)

[Table 3.13 Some parallels between adaptive and innate immune systems: examp...](#)

[Table 3.14 Features of some primary defects of neutrophil function resultin...](#)

[Table 3.15 Immunological tests\\* in Case 3.7, chronic granulomatous dise...](#)

[Table 3.16 Immunological investigations\\* in Case 3.9, complement defici...](#)

[Table 3.17 Immunological investigations\\* in Case 3.10, human immunodef...](#)

[Table 3.18 Immunological investigations\\* in Case 3.11, human immunodef...](#)

## Chapter 4

[Table 4.1 \(a\) Some of the candidate genes implicated in development of atop...](#)

[Table 4.1 \(b\) Candidate genes defined so far by genome-wide association stud...](#)

[Table 4.2 Clinical features of anaphylaxis](#)

[Table 4.3 Key features of latex rubber allergy](#)

[Table 4.4 Features of asthma](#)

[Table 4.5 Adverse reactions to foods](#)

[Table 4.6 Differential diagnosis of food intolerance in children](#)

## Chapter 5

[Table 5.1 Criteria that confirm that a particular autoimmune response cause...](#)

[Table 5.2 Immunoglobulin G antibody-mediated diseases capable of placental ...](#)

[Table 5.3 Some examples of self-antigens and associated diseases. More info...](#)

[Table 5.4 Single-gene defects that provide an insight into autoimmune disea...](#)

[Table 5.5 The genetic contribution to autoimmune disease as shown by increa...](#)

[Table 5.6 Possible mechanistic associations between some common autoimmune ...](#)

[Table 5.7 Molecular mimicry: microbial antigens and self-antigens potential...](#)

[Table 5.8 Syndromes of probable autoimmune aetiology triggered by therapeut...](#)

[Table 5.9 Selected examples of immune checkpoint inhibitors and autoimmune ...](#)

[Table 5.10 Mechanisms of hypersensitivity that predominate in autoimmune di...](#)

## Chapter 6

[Table 6.1 Techniques used to identify lymphoid malignancies\\*](#)

[Table 6.2 Panel of antibodies for the diagnosis of acute leukaemias](#)

[Table 6.3 Complications of acute lymphoblastic leukaemia associated with di...](#)

[Table 6.4 Immunophenotyping in differential diagnosis of chronic lymphocyti...](#)

[Table 6.5 Simplified staging of Hodgkin's disease](#)

[Table 6.6 Comparison of monoclonal gammopathy of unknown significance \(MGUS...](#)

[Table 6.7 Cytogenetic factors contributing to prognosis in multiple myeloma...](#)

[Table 6.8 Comparison of clinical features of multiple myeloma and Waldenstr...](#)

## Chapter 7

[Table 7.1 Actions of corticosteroids on the human immune system](#)

[Table 7.2 Actions of thiopurines on the human immune system](#)

[Table 7.3 Intravenous immunoglobulin as an immunomodulatory therapeutic age...](#)

[Table 7.4 Monoclonal antibodies in current or potential therapeutic use](#)

[Table 7.5 Effects of plasmapheresis in various diseases](#)

[Table 7.6 Relative advantages and disadvantages of vaccines](#)

[Table 7.7 Current recommended immunization schedule for the UK](#)

[Table 7.8 General contraindications to immunization](#)

[Table 7.9 Antitumour and immunomodulatory properties of interferons](#)

[Table 7.10 Potential clinical applications of recombinant haematopoietic co...](#)

## Chapter 8

[Table 8.1 Drugs used as antirejection therapy in renal transplantation](#)

[Table 8.2 Patient survival in various forms of transplantation](#)

[Table 8.3 Indications for haemopoietic stem cell transplantation](#)

[Table 8.4 Comparison of haemopoietic stem cell transplantation \(HSCT\) for p...](#)

## Chapter 9

[Table 9.1 Some descriptive terms used in the morphological classification o...](#)

[Table 9.2 Examples of immune-complex nephritis in humans](#)

[Table 9.3 A comparison of type I and type II membranoproliferative glomerul...](#)

[Table 9.4 Modified World Health Organization classification of lupus nephri...](#)

[Table 9.5 Protein component of amyloid fibrils](#)

[Table 9.6 Principles of treatment of amyloidosis](#)

[Table 9.7 Causes of end-stage renal failure](#)

[Table 9.8 Recurrence of original disease in kidney grafts](#)

## Chapter 10

[Table 10.1 Major factors in the assessment of the patient with joint diseases...](#)

[Table 10.2 Common patterns of inflammatory joint disease](#)

[Table 10.3 Relative frequency of bacterial causes of septic arthritis in th...](#)

[Table 10.4 Extraarticular features of rheumatoid arthritis \(RA\): the common...](#)

[Table 10.5 Evidence that T and B cells play a central role in the pathogene...](#)

[Table 10.6 Autoimmune responses identified in patients with rheumatoid arth...](#)

[Table 10.7 How possession of an HLA-DRB1 allele containing the 'shared epit...](#)

[Table 10.8 Predictors of a poor prognosis in early rheumatoid arthritis](#)

[Table 10.9 Presenting features of systemic lupus erythematosus](#)

[Table 10.10 Cumulative organ involvement in patients with systemic lupus er...](#)

[Table 10.11 American College of Rheumatology criteria for diagnosis of syst...](#)

[Table 10.12 Investigations in Case 10.8 \(also see Chapter 19, Table 19.6\)](#)

[Table 10.13 Laboratory findings in untreated systemic lupus erythematosus \(...\)](#)

[Table 10.14 Interpretation of serial serological changes in systemic lupus ...](#)

[Table 10.15 Features of mixed connective tissue diseases](#)

[Table 10.16 Classification of autoimmune myositis](#)

[Table 10.17 Epidemiological, genetic and clinical features of the hereditar...](#)

## Chapter 11

[Table 11.1 Effects of ultraviolet radiation on the skin](#)

[Table 11.2 Some agents responsible for allergic contact dermatitis](#)

[Table 11.3 Some causes of vasculitis](#)

[Table 11.4 Classification of vasculitis](#)

[Table 11.5 Characteristic features of the different forms of cutaneous lupu...](#)

[Table 11.6 Autoantibodies in systemic sclerosis](#)

## Chapter 12

[Table 12.1 Conjunctivitis and types of hypersensitivity](#)

[Table 12.2 Systemic immunological diseases and the eye](#)

## Chapter 13

[Table 13.1 Respiratory infections classified according to site and pattern ...](#)

[Table 13.2 Important non-immunological causes of recurrent or severe infect...](#)

[Table 13.3 Risk factors for developing tuberculosis](#)



[Table 13.4 Systemic involvement in sarcoidosis \(with incidence in either gr...](#)

[Table 13.5 Major causes of interstitial lung disease and pulmonary fibrosis...](#)

[Table 13.6 Common antigens involved in some varieties of extrinsic allergic...](#)

[Table 13.7 Evidence that the idiopathic interstitial pneumonias \(IIPs\) may...](#)

[Table 13.8 Epidemiology, histology, treatment and outcome in the idiopathic...](#)

[Table 13.9 Patterns of lung disease in the major connective tissue diseases...](#)

## Chapter 14

[Table 14.1 Some examples of immunological involvement in intestinal disease...](#)

[Table 14.2 Types of gastritis](#)

[Table 14.3 Features of pernicious anaemia \(PA\) consistent with an autoimmun...](#)

[Table 14.4 Occurrence of gastric autoantibodies](#)

[Table 14.5 Laboratory investigation in Case 14.2](#)

[Table 14.6 Immunological features of coeliac disease](#)

[Table 14.7 Some differences between ulcerative colitis and Crohn's disease...](#)

[Table 14.8 Comparison of major features of hepatitis A, B, C and E](#)

[Table 14.9 Major features of autoimmune chronic active hepatitis and primar...](#)

[Table 14.10 Basic distinctions between directly toxic and hypersensitivity...](#)

## Chapter 15

[Table 15.1 Prevalence and relative strength of antibodies to thyroid peroxi...](#)

[Table 15.2 Types of diabetes mellitus](#)

[Table 15.3 Association of 'idiopathic' Addison's disease with other endocri...](#)

## Chapter 16

[Table 16.1 Comparative features of warm and cold autoimmune haemolytic anae...](#)

[Table 16.2 Comparison of acute and chronic immune thrombocytopenia](#)

[Table 16.3 Comparison of primary antiphospholipid antibody \(APA\) syndrome a...](#)

[Table 16.4 Potential complications of blood transfusion \(fortunately rare\)...](#)

## Chapter 17

[Table 17.1 Important neurological complications of human immunodeficiency v...](#)

[Table 17.2 Cerebrospinal fluid investigations for multiple sclerosis in Cas...](#)

[Table 17.3 Heterogeneity of myasthenia gravis \(MG\).](#)

[Table 17.4 Common associations of peripheral neuropathies](#)

[Table 17.5 Immune-mediated peripheral neuropathies \(with associated autoant...](#)

[Table 17.6 Selected paraneoplastic neurological syndromes](#)

[Table 17.7 Investigations for cerebral systemic lupus erythematosus in Case...](#)

[Table 17.8 Selected autoantibodies associated with autoimmune encephalitis...](#)

## Chapter 19

[Table 19.1 Examples\\* of major polyclonal elevations in immunoglobulin l...](#)

[Table 19.2 Interpretation of complement changes in disease](#)

[Table 19.3 The use of test immunization to assess antibody production in a ...](#)

[Table 19.4 Indirect immunofluorescent tests for commoner non-organ-specific...](#)

[Table 19.5 Indirect immunofluorescent tests for commoner organ-specific aut...](#)

[Table 19.6 Some autoantibodies detected by radioimmunoassay.](#)

[Table 19.7 Some autoantibodies detected by enzyme-linked immunosorbent assa...](#)

[Table 19.8 Antibodies to different components of extractable nuclear antige...](#)

[Table 19.9 Tests of T-lymphocyte activation pathways](#)

# List of Illustrations

## Chapter 1

[Fig. 1.1 Development of different types of blood cells from a pluripotential...](#)

[Fig. 1.2 Sequential cellular events induced by engagement of Toll-like recep...](#)

[Fig. 1.3 Schematic representation of NLRP3 inflammasome activation.](#)

[Fig. 1.4 Diagram of the structure of the T-cell receptor \(TCR\). The variable...](#)

[Fig. 1.5 Diagrammatic representation of major histocompatibility complex \(MH...](#)

[Fig. 1.6 Major histocompatibility complex \(MHC\) restriction of antigen recog...](#)

[Fig. 1.7 Major histocompatibility complex on chromosome 6; class III antigen...](#)

[Fig. 1.8 Different routes of antigen presentation, depending on the nature o...](#)

[Fig. 1.9 Basic structure of an immunoglobulin molecule. Domains are held in ...](#)

[Fig. 1.10 Schematic representation of immunoglobulin \(Ig\)M pentamer \(MW 800 ...](#)

[Fig. 1.11 Schematic representation of dimeric secretory immunoglobulin \(Ig\)A...](#)

[Fig. 1.12 Immunoglobulin genes \(see text for explanation\).](#)

[Fig. 1.13 Diagrammatic representation of adhesion molecules on T cells and t...](#)

[Fig. 1.14 Adhesion molecules and leucocyte-endothelial interactions.](#)

[Fig. 1.15 Receptors and functions of mononuclear phagocytic cells.](#)

[Fig. 1.16 Antigen-presenting cells and their associated sites.](#)

[Fig. 1.17 \(a, b\) Role of co-stimulatory pathway in T-cell activation. APC, a...](#)

[Fig. 1.18 Organization of spleen.](#)

[Fig. 1.19 Basic principle underlying the cleavage of complement components....](#)

[Fig. 1.20 Functions of complement pathways. MASP, MBL-associated serine prot...](#)

[Fig. 1.21 Transport of immune complexes by erythrocytes to macrophages in li...](#)

[Fig. 1.22 Complement pathways and their initiating factors. MBL, mannan-bind...](#)

[Fig. 1.23 Opsonins and the relationship to phagocytosis.](#)

[Fig. 1.24 Role of cells in early immune response to virus infection. Early -...](#)

[Fig. 1.25 Natural killer \(NK\) cell recognition of target cells. NK cell kill...](#)

[Fig. 1.26 Th1 and Th2 cells and their cytokine profiles; broken arrows indic...](#)

[Fig. 1.27 Primary and secondary antibody \(Ab\) responses following antigenic ...](#)

[Fig. 1.28 Interaction between CD40L on T cells and CD40 on B cells, under th...](#)

[Fig. 1.29 Mechanisms in immunoglobulin \(Ig\)E-mediated hypersensitivity.](#)

[Fig. 1.30 Clinical consequences of cell-bound hypersensitivity. ITP, immune ...](#)

[Fig. 1.31 Immune complex formation in acute serum sickness.](#)

[Fig. 1.32 Recirculation pathways of lymphocytes. The majority of naive T cel...](#)

## Chapter 2

[Fig. 2.1 Some non-specific defence mechanisms.](#)

[Fig. 2.2 A schematic representation of the mobilization of bone marrow store...](#)

[Fig. 2.3 Role of the macrophage in host defence. IL, interleukin; LPS, lipop...](#)

[Fig. 2.4 Specific immune responses to microorganisms: an overview. APC, anti...](#)

[Fig. 2.5 Time sequence of immune response to viral infection. IFN, interfero...](#)

[Fig. 2.6 Superantigen-induced T-cell stimulation. APC, antigen-presenting ce...](#)

[Fig. 2.7 Recognized complications of  \$\beta\$ -haemolytic streptococcal infection. G...](#)

[Fig. 2.8 Following Group A Streptococcus \(GAS\) adhesion to and invasion of t...](#)

[Fig. 2.9 Diagrammatic representation of immune response to mycobacteria resu...](#)

[Fig. 2.10 Clinical spectrum of disease in leprosy in relation to immune resp...](#)

[Fig. 2.11 IgE production in helminth infection may be an epiphenomenon. IL, ...](#)

## Chapter 3

[Fig. 3.1 Primary and secondary immune deficiencies.](#)

[Fig. 3.2 Defects in immunity suggested by infections with certain organisms....](#)

[Fig. 3.3 Serum immunoglobulin levels and age. Maternally transferred IgG \(· ...](#)

[Fig. 3.4 Presenting infections in particular organs in patients with primary...](#)

[Fig. 3.5 Gene and protein defects in B-cell development and function. Haemat...](#)

[Fig. 3.6 Bronchiectasis – \(a\) computed tomography scan and \(b\) bronchogram \(...](#)

[Fig. 3.7 Lymph node from a patient with CD40 ligand deficiency showing impai...](#)

[Fig. 3.8 Clinical associations of IgA deficiency. RR, Relative risk.](#)

[Fig. 3.9 Kaplan-Meier curve for patients with and without non-infectious com...](#)

[Fig. 3.10 Absolute lymphocyte count \(mean  \$\pm\$  SD\) in 132 infants with severe...](#)

[Fig. 3.11 Some causes of neutropenia. Secondary causes are far more common t...](#)

[Fig. 3.12 Inherited complement deficiencies: characteristic clinical syndrom...](#)

[Fig. 3.13 Common causes of secondary immunodeficiency.](#)

[Fig. 3.14 Chronology of human immunodeficiency virus \(HIV\)-induced disease c...](#)

[Fig. 3.15 Potential therapies for human immunodeficiency virus \(HIV\) disease...](#)

[Fig. 3.16 Organisms causing infections in patients on immunosuppressive trea...](#)



## Chapter 4

[Fig. 4.1 Mast cell triggering and the results of mediator release.](#)

[Fig. 4.2 Acute conjunctivitis.](#)

[Fig. 4.3 Causes of rhinitis.](#)

[Fig. 4.4 Relationship between antigen size and the site of major symptomatology...](#)

[Fig. 4.5 Some precipitating factors in asthma.](#)

[Fig. 4.6 Major cytokines implicated in airways inflammation. GM-CSF, g...](#)

[Fig. 4.7 The development of airways inflammation and bronchial hyper-respons...](#)

[Fig. 4.8 Putative clinical spectrum of food intolerance.](#)

[Fig. 4.9 Typical urticaria.](#)

[Fig. 4.10 Angioedema of the lower lip.](#)

[Fig. 4.11 Mechanisms of urticaria production. ACE, angiotensin-converting en...](#)

[Fig. 4.12 Childhood eczema presents as a rash on the face and in the flexura...](#)

## Chapter 5

[Fig. 5.1 Representation of T-cell selection in the thymus by thymic epitheli...](#)

[Fig. 5.2 How peripheral T-cell tolerance is maintained. IL, interleukin; TCR...](#)

[Fig. 5.3 Diagrammatic representation of the different recirculation pathways...](#)

[Fig. 5.4 Schematic representation of sites of action of checkpoint inhibitor...](#)

[Fig. 5.5 A conceptual demonstration of how breakdown of tolerance leads to a...](#)

## Chapter 6

[Fig. 6.1 A malignant translocation: Abl is an oncogene on chromosome 9; Bcr ...](#)

[Fig. 6.2 Malignant counterparts at each step in the leucocyte differentiatio...](#)

[Fig. 6.3 Decade of onset in acute lymphoblastic leukaemia \(ALL; yellow line\)...](#)

[Fig. 6.4 Markers of various forms of acute lymphoblastic leukaemia \(ALL\). Se...](#)

[Fig. 6.5 Chronic lymphocytic leukaemia \(CLL\) blood film.](#)

[Fig. 6.6 Origins of various forms of chronic leukaemia. See Fig. 6.2 for abb...](#)

[Fig. 6.7 Zoster infection.](#)

[Fig. 6.8 Immunopathogenesis in lymphoma.](#)

[Fig. 6.9 Distribution of lymph nodes in lymphoma.](#)

[Fig. 6.10 Development of lymphoid malignancy after monoclonal gammopathy of ...](#)

[Fig. 6.11 Typing an M band by immunofixation. In this schematic example \(a\),...](#)

[Fig. 6.12 Skull X-ray in myeloma showing lytic lesions.](#)

[Fig. 6.13 Bone marrow in myeloma showing an excess of plasma cells.](#)

## Chapter 7

[Fig. 7.1 Schematic depiction of the main intracellular sites of action of th...](#)

[Fig. 7.2 Side effects of long-term treatment with corticosteroids.](#)

[Fig. 7.3 Mechanism of immunosuppressive action of ciclosporin. In step 2 the...](#)

[Fig. 7.4 Schematic representation of the role of the endothelial FcRn recept...](#)

[Fig. 7.5 Infant with Kawasaki's disease with an erythematous, predominantly ...](#)

[Fig. 7.6 Schematic depiction of humanized and chimeric antibodies.](#)

[Fig. 7.7 Targets for monoclonal antibodies as immunosuppressive agents. APC,...](#)

[Fig. 7.8 Impact of CTLA-4 fusion protein on T-cell activation.](#)

[Fig. 7.9 Classification of immunity.](#)

[Fig. 7.10 Effect of introduction of Haemophilus influenzae type B \(Hib\) conj...](#)

[Fig. 7.11 Timeline of Covid vaccine development.](#)

[Fig. 7.12 Biological treatments in malignant disease. IL-2, interleukin-2; T...](#)

[Fig. 7.13 Gene therapy for severe combined immunodeficiency \(SCID\) associate...](#)

[Fig. 7.14 Schematic representation of a CAR-T cell.](#)

[Fig. 7.15 Schematic representation of adoptive cell therapy with CAR-T cells...](#)

## Chapter 8

[Fig. 8.1 Major histocompatibility complex on chromosome 6; class III antigen...](#)

[Fig. 8.2 Inheritance of human leucocyte antigen \(HLA\) haplotypes in a family...](#)

[Fig. 8.3 Requirements for successful renal transplantation: selection of don...](#)

[Fig. 8.4 Schematic representation of detection of cytotoxic antibodies in re...](#)

[Fig. 8.5 Causes of graft failure.](#)

[Fig. 8.6 Acute renal transplant rejection \(cellular\) showing interstitial oe...](#)

[Fig. 8.7 Chronic renal transplant rejection showing intimal proliferation wi...](#)

[Fig. 8.8 Immunopathology of rejection \(the allograft response\). APC, antigen...](#)

[Fig. 8.9 Effect of human leucocyte antigen \(HLA\) matching on renal allograft...](#)

[Fig. 8.10 Timetable for the occurrence of infection in renal transplant reci...](#)

[Fig. 8.11 Heart graft survival. Aza, azathioprine; Cyclo, cyclophosphamide; ...](#)

[Fig. 8.12 Haematological and immune reconstitution following bone marrow tra...](#)

[Fig. 8.13 Strategies for cytomegalovirus \(CMV\) prophylaxis.](#)

## Chapter 9

[Fig. 9.1 Overlap of nephritic and nephrotic features of various forms of glo...](#)

[Fig. 9.2 \(a\) Normal glomerular structure. \(b\). Normal glomerular histology \(p...](#)

[Fig. 9.3 A section across a normal capillary loop \(see text for explanation\)...](#)

[Fig. 9.4 Immunopathological mechanisms involved in the clinical syndromes of...](#)

[Fig. 9.5 \(a\) IgA nephropathy showing IgA deposits in the mesangium on immuno...](#)

[Fig. 9.6 Henoch-Schönlein purpura in an adult.](#)

[Fig. 9.7 Immune-complex formation in acute serum sickness.](#)

[Fig. 9.8 \(a\) Characteristic 'humps' seen in post-streptococcal glomeruloneph...](#)

[Fig. 9.9 Post-streptococcal glomerulonephritis showing 'lumpy-bumpy' deposit...](#)

[Fig. 9.10 Factors influencing the development of immune-complex disease. CR1...](#)

[Fig. 9.11 Sites of immune-complex deposition in humans. The size of the comp...](#)

[Fig. 9.12 Schematic representation of direct immunohistological staining of ...](#)

[Fig. 9.13 Membranoproliferative glomerulonephritis. Two major types can be r...](#)

[Fig. 9.14 Clinical and immunological classification of rapidly progressive g...](#)

[Fig. 9.15 Antiglomerular basement membrane nephritis showing \(a\) a crescent ...](#)

[Fig. 9.16 Antineutrophil cytoplasmic antibody \(ANCA\)-associated glomerulonep...](#)

[Fig. 9.17 Renal morphology in patients with the nephrotic syndrome. Primary...](#)

## Chapter 10

[Fig. 10.1 Diagrammatic representation of a joint. One side is normal, the ot...](#)

[Fig. 10.2 Symmetrical synovitis in early rheumatoid arthritis.](#)

[Fig. 10.3 How CD4<sup>+</sup> T cells and immune complexes may control the events leadi...](#)

[Fig. 10.4 The central role of tumour necrosis factor \(TNF\)- \$\alpha\$  in rheumatoid s...](#)

[Fig. 10.5 Bamboo lumbar spine in ankylosing spondylitis.](#)

[Fig. 10.6 Classification of juvenile idiopathic arthritis. Disorders on the ...](#)

[Fig. 10.7 Nuclear antigens: their role in diagnosis in rheumatic conditions....](#)

[Fig. 10.8 Distinguishing clinical features of rheumatoid arthritis and syste...](#)

[Fig. 10.9 Multiple factors combine in the aetiology of systemic lupus erythe...](#)

[Fig. 10.10 Immune complex metabolism in normal subjects \(left\) and those wit...](#)

[Fig. 10.11 Clinical features of primary Sjögren's syndrome.](#)

[Fig. 10.12 Dry eyes in Sjögren's syndrome demonstrated by Schirmer's test....](#)

[Fig. 10.13 Histology of three types of vasculitis in patients who may presen...](#)

[Fig. 10.14 Clinical features of polyarteritis nodosa. CNS, central nervous s...](#)

[Fig. 10.15 Occluded, temporal artery in giant cell arteritis. The vessel wal...](#)

## Chapter 11

[Fig. 11.1 Multiple proinflammatory factors produced by keratinocytes in resp...](#)

[Fig. 11.2 The spectrum of skin disease in human immunodeficiency virus \(HIV\)...](#)

[Fig. 11.3 The pathogenesis of allergic contact dermatitis. Langerhans cells ...](#)

[Fig. 11.4 Guttate psoriasis.](#)

[Fig. 11.5 Immunological mechanisms in psoriasis, and how targeted biological...](#)

[Fig. 11.6 Characteristic findings on direct immunofluorescent examination of...](#)

[Fig. 11.7 Autoantigens in bullous skin disease. BMZ, basement membrane zone....](#)

[Fig. 11.8 Bullous pemphigoid.](#)

[Fig. 11.9 Severe periorbital angioedema.](#)

[Fig. 11.10 Principles underlying the treatment of C1 inhibitor \(INH\) deficie...](#)

[Fig. 11.11 Typical changes of subacute cutaneous lupus erythematosus on the ...](#)

[Fig. 11.12 Raynaud's phenomenon in limited systemic sclerosis.](#)

[Fig. 11.13 Classification of scleroderma.](#)

[Fig. 11.14 Features of systemic sclerosis.](#)



## Chapter 12

[Fig. 12.1 Anatomy of the eye. \(a\) In lateral section \(only the lower eyelid ...](#)

[Fig. 12.2 Symptoms and signs of eye disease.](#)

[Fig. 12.3 Classification of uveitis by site and time scale of symptoms \(post...](#)

[Fig. 12.4 Keratic precipitates cover the posterior surface of the cornea in ...](#)

[Fig. 12.5 Retinal vasculitis showing vascular occlusion and haemorrhage from...](#)

[Fig. 12.6 Hypopyon due to severe anterior chamber inflammation in Behçet's d...](#)

## Chapter 13

[Fig. 13.1 Non-specific protective mechanisms in the airways. IL, interleukin...](#)

[Fig. 13.2 Patterns of respiratory infection associated with specific immunod...](#)

[Fig. 13.3 A classification of granulomatous lung diseases.](#)

[Fig. 13.4 Mechanisms of T cell-dependent granuloma formation. IL, interleuki...](#)

[Fig. 13.5 Cut section of lung from a patient who died from miliary tuberculo...](#)

[Fig. 13.6 Strongly positive Mantoux reaction 96 h after the intradermal inje...](#)

[Fig. 13.7 Classification and causes of pulmonary eosinophilia.](#)

[Fig. 13.8 High-resolution computed tomography scans of the lungs of a patien...](#)