

Physical Examination of the Newborn at a Glance

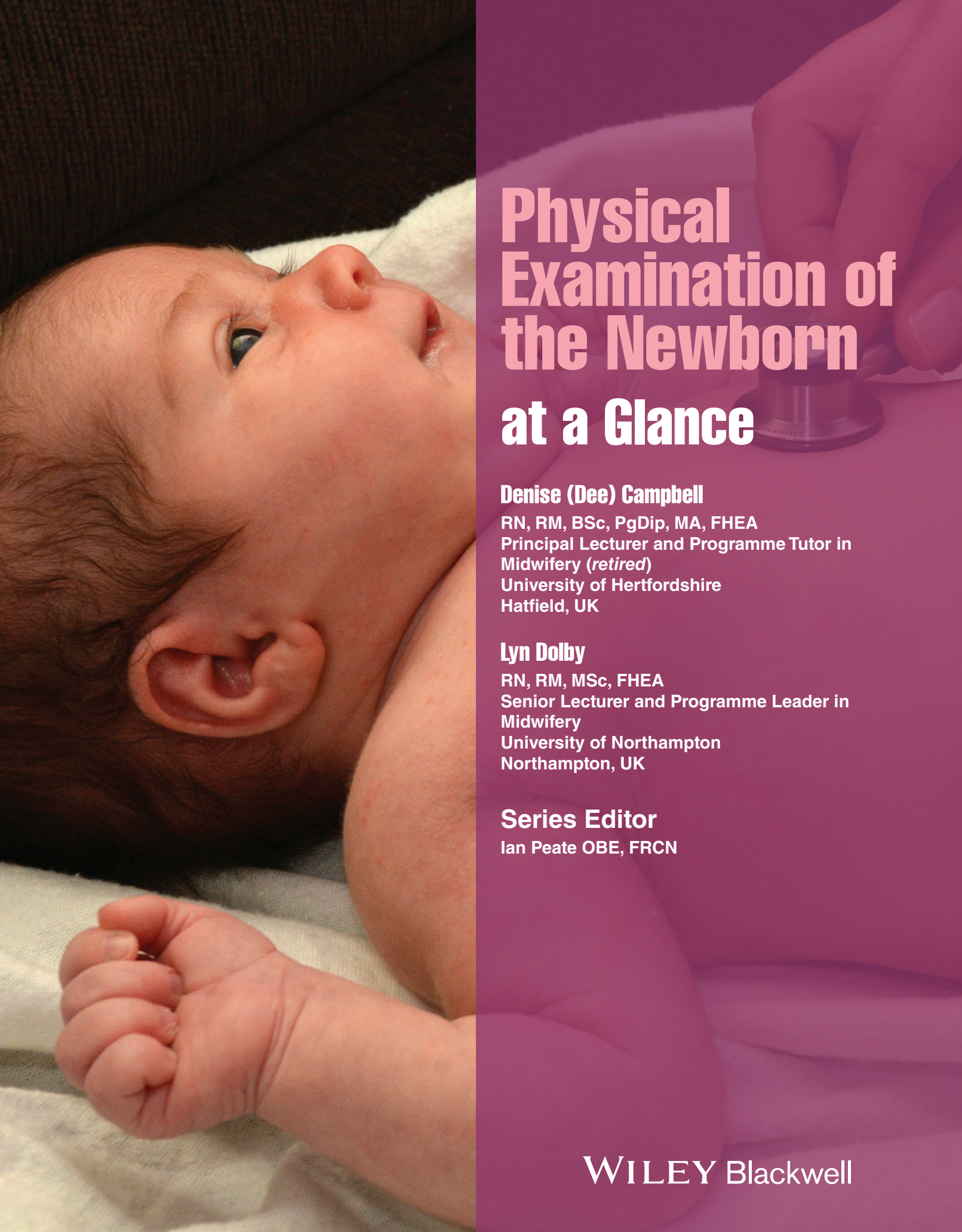
**Denise (Dee) Campbell
Lyn Dolby**



WILEY Blackwell

Physical Examination of the Newborn at a Glance

This title is also available as an e-book.
For more details, please see
www.wiley.com/buy/9781119155577



Physical Examination of the Newborn at a Glance

Denise (Dee) Campbell

RN, RM, BSc, PgDip, MA, FHEA
Principal Lecturer and Programme Tutor in
Midwifery (*retired*)
University of Hertfordshire
Hatfield, UK

Lyn Dolby

RN, RM, MSc, FHEA
Senior Lecturer and Programme Leader in
Midwifery
University of Northampton
Northampton, UK

Series Editor

Ian Peate OBE, FRCN

WILEY Blackwell

This edition first published 2018
© 2018 John Wiley & Sons Ltd.

All rights reserved. No part of this publication may be reproduced, stored in a retrieval system, or transmitted, in any form or by any means, electronic, mechanical, photocopying, recording or otherwise, except as permitted by law. Advice on how to obtain permission to reuse material from this title is available at <http://www.wiley.com/go/permissions>.

The right of Denise Campbell and Lyn Dolby to be identified as the authors of this work has been asserted in accordance with law.

Registered Offices

John Wiley & Sons, Inc., 111 River Street, Hoboken, NJ 07030, USA
John Wiley & Sons Ltd., The Atrium, Southern Gate, Chichester, West Sussex, PO19 8SQ, UK

Editorial Office

9600 Garsington Road, Oxford, OX4 2DQ, UK

For details of our global editorial offices, customer services, and more information about Wiley products visit us at www.wiley.com.

Wiley also publishes its books in a variety of electronic formats and by print-on-demand. Some content that appears in standard print versions of this book may not be available in other formats.

Limit of Liability/Disclaimer of Warranty

The contents of this work are intended to further general scientific research, understanding, and discussion only and are not intended and should not be relied upon as recommending or promoting scientific method, diagnosis, or treatment by physicians for any particular patient. In view of ongoing research, equipment modifications, changes in governmental regulations, and the constant flow of information relating to the use of medicines, equipment, and devices, the reader is urged to review and evaluate the information provided in the package insert or instructions for each medicine, equipment, or device for, among other things, any changes in the instructions or indication of usage and for added warnings and precautions. While the publisher and authors have used their best efforts in preparing this work, they make no representations or warranties with respect to the accuracy or completeness of the contents of this work and specifically disclaim all warranties, including without limitation any implied warranties of merchantability or fitness for a particular purpose. No warranty may be created or extended by sales representatives, written sales materials or promotional statements for this work. The fact that an organisation, website, or product is referred to in this work as a citation and/or potential source of further information does not mean that the publisher and authors endorse the information or services the organisation, website, or product may provide or recommendations it may make. This work is sold with the understanding that the publisher is not engaged in rendering professional services. The advice and strategies contained herein may not be suitable for your situation. You should consult with a specialist where appropriate. Further, readers should be aware that websites listed in this work may have changed or disappeared between when this work was written and when it is read. Neither the publisher nor authors shall be liable for any loss of profit or any other commercial damages, including but not limited to special, incidental, consequential, or other damages.

Library of Congress Cataloging-in-Publication Data are available

ISBN: 9781119155577

Cover image: © chameleonseye/Gettyimages
Cover design by Wiley

Set in Minion Pro 9.5/11.5 pt by Aptara

10 9 8 7 6 5 4 3 2 1

Contents



Preface ix

Part 1

Professional issues 1

Section 1 Professionalism

- 1 Public health screening 2
- 2 Quality and standard setting 4
- 3 Record keeping and professional competency 6
- 4 Safeguarding 8
- 5 Health promotion and education 10

Section 2 Communication skills

- 6 Communication during the examination 12
- 7 Communicating concerns to parents 14

Part 2

Neonatal physiology and pathophysiology 17

Section 3 Adaptation

- 8 Adaptation to neonatal life 18
- 9 Thermoregulation 20

Section 4 Emergency management

- 10 Resuscitation of the newborn 22
- 11 Hypoglycaemia 24

Section 5 Jaundice

- 12 Physiological jaundice 26
- 13 Pathological jaundice 28

Section 6 Disorders

- 14 Metabolic disorders 30
- 15 Jitteriness, seizures and hypotonia 32
- 16 Congenital infection and sepsis 34
- 17 Anaemia and polycythaemia 36

Section 7 Birth complications

- 18 Intrapartum injury/trauma 38

Part 3

Allied assessments 41

Section 8 Routine care

- 19 Initial examination at birth – overview 42
- 20 Daily examination of the newborn – overview 44

Section 9 Screening

- 21 Newborn blood spot screening 46
- 22 Hearing screening 48

Part 4

Prior to the physical examination 51

Section 10 Preparation

- 23 Preparing to examine 52
- 24 Infection control 54

Section 11 History awareness

- 25 Relevant history and risk factors 56
- 26 Feeding 58
- 27 Excretion 60

Part 5

Top to toe physical examination 63

Section 12 Broad assessment

- 28 Newborn and infant physical examination – overview 64
- 29 Neurological assessment 66
- 30 Reflexes 68
- 31 Common skin conditions 70
- 32 Atypical skin conditions 72

Section 13 Head and neck

- 33 Head 74
- 34 Facies 76
- 35 Eyes 78
- 36 Mouth 80
- 37 Neck and clavicles 82

Section 14 Upper body

- 38 Chest appearance 84
- 39 Cardiovascular assessment 86
- 40 Respiratory assessment and hypoxia 88
- 41 Upper limbs and hands 90
- 42 Abdomen 92
- 43 Back, spine, buttocks and anus 94

Section 15 Pelvis and lower body

- 44 Developmental dysplasia of the hips 96
- 45 Genitalia – female 98
- 46 Genitalia – male 100
- 47 Lower limbs and feet 102

Section 16 Revision**48** Syndromes and signs 106**49** Scenarios 108**Section 17 Self-assessment**

Crosswords and multiple choice questions 109

Crosswords and multiple choice questions – answers 112

References 114*Index* 117

Preface



Since the early 1990s, midwives have been able to access further training in order to become Newborn and Infant Physical Examination (NIPE) practitioners and incorporate the examination of the newborn into their daily practice. Not all midwives have yet undertaken the course, but in recent years a growing number of higher education institutions have started to incorporate the course into their pre-registration midwifery programmes. This action not only aligns with one of the key points highlighted within the document *Midwifery 2020* (Department of Health, 2010), but also enables midwifery students to conduct solo NIPEs at the point of registration as a qualified midwife.

However, this book is not for the sole use of midwives or student midwives, as there have been a growing number of neonatal intensive care nurses who also access the course. Therefore, the content of this book seeks to give both students and those already qualified as NIPE practitioners an 'at-a-glance' understanding of the key elements that relate to this valuable skill. For some, this will be the first step in their journey to

become NIPE practitioners, for others this book will provide a revision aid or an opportunity to update professional knowledge and understanding.

We strongly believe that the examination is an important part of normal, holistic, woman-centred care. The content of this book covers the main conditions and issues relating to physical examination of the newborn. We have also provided some crosswords and multiple choice questions to enable the reader to undertake a short self-test.

We hope the reader finds this book a useful aid to learning and professional practice.

Reference

Department of Health. (2010). *Midwifery 2020: Delivering Expectations*. London: The Stationery Office. Retrieved from: https://www.gov.uk/government/uploads/system/uploads/attachment_data/file/216029/dh_119470.pdf (accessed 23 October 2017).



Professional issues

Part 1

Chapters

Section 1 Professionalism

- 1 Public health screening 2
- 2 Quality and standard setting 4
- 3 Record keeping and professional competency 6
- 4 Safeguarding 8
- 5 Health promotion and education 10

Section 2 Communication skills

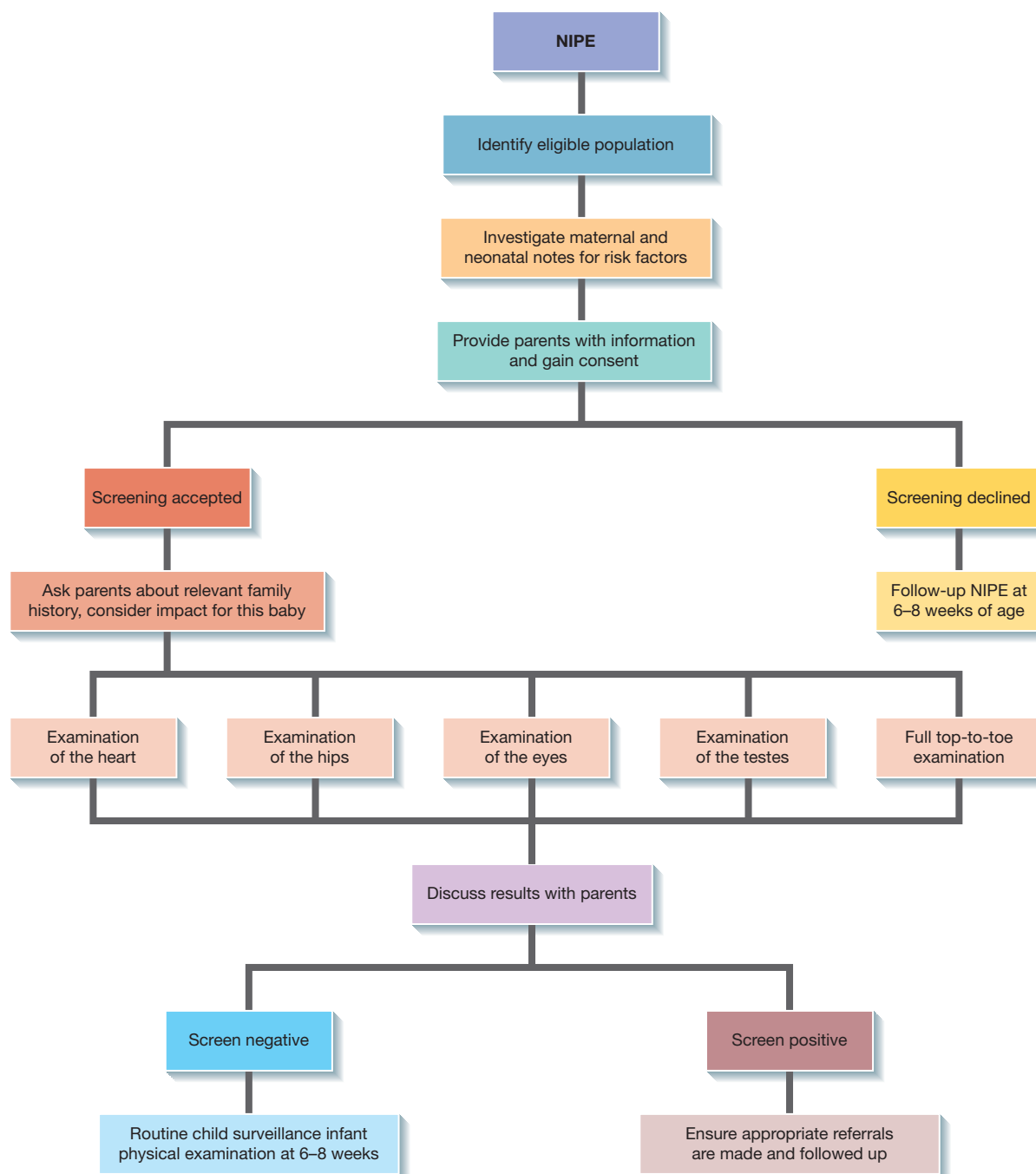
- 6 Communication during the examination 12
- 7 Communicating concerns to parents 14

1

Public health screening

Figure 1.1 Newborn screening process (72 hours).

Source: Adapted from Public Health England (2016a). Contains public sector information licensed under the Open Government Licence v3.0.



Public Health England (PHE) is an operationally autonomous executive agency of the Department of Health. The prime role of PHE is to reduce health inequality and protect and improve the health and well-being of the nation's individuals. The National Health Service (NHS) national population screening programmes are developed and implemented on the advice

given by the National Screening Committee (NSC) in the United Kingdom (UK). The NSC provides evidence-based recommendations to government ministers in all four UK countries.

PHE supports its activities by drawing evidence from world class research and by promoting advocacy and collaborative partnerships, all of which assist the delivery of specialist public